

# NETASQ Global Administration

Centralized Management, Monitoring, Logging and Reporting

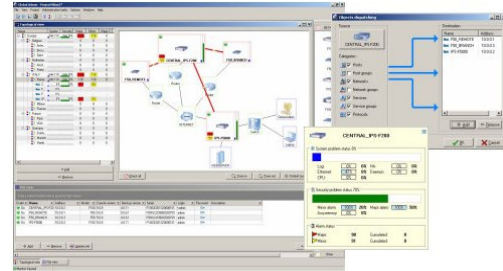
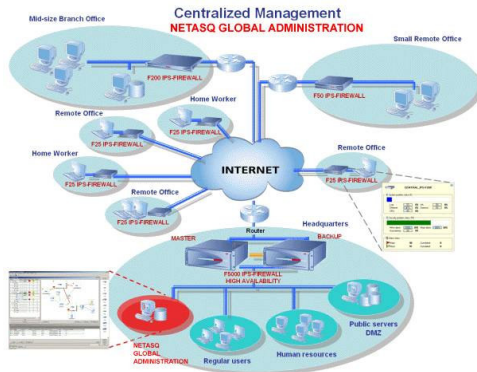
NETASQ Global Administration allows companies, integrators or service providers to manage large deployments of NETASQ IPS-Firewalls from a central location. An easy to use graphical user interface enables you to centrally **update**, **monitor** and **configure** NETASQ IPS-Firewalls. Time-intensive tasks such as updating a large number of **license keys** or making **backups** can now all be done in a centralized way. Comprehensive log collection stores the logs of deployed IPS-Firewalls in a SQL-database, enabling high-speed trouble-shooting and generating **reports** that can be easily integrated with other applications.

## Product Highlights

- Centralized policy management
- Object management
- Real-time monitoring
- Update and Backup Management
- License management
- Point and click updating
- Extensive logging and reporting
- Topology overview

**NETASQ Global Administration** enables organizations, distributed enterprises and service providers to manage, monitor and collect logs from a central location for thousands of NETASQ IPS-Firewalls. By providing an easy-to-use central security solution, management efficiency will increase, while overhead and operating costs will be reduced.

**Managed Security Services**  
NETASQ Global Administration is focused on easy deployment and ease of use: the ideal solution for Managed Security Services. A scalable subscriber management system enables integrators to offer their services in a centralized way. A powerful graphical interface offers topology and administrative views in which you can easily configure, monitor, update and make backups or install license keys for large deployments of NETASQ IPS-Firewalls.

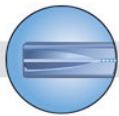


**Configuration**  
Administrators can manage IPS-Firewalls running version 5.0.x or 6.x can benefit from **point-and-click management** of complex tasks. With a few mouse clicks, you can configure an IPS-Firewall, make a backup, create a security policy or manage software updates. Global Admin can automatically connect to NETASQ's website, download the appropriate firmware, deploy it over a selected group of IPS-Firewalls and verify if the update was successfully applied.

**Monitoring**  
Topological and administrative overviews provide a clear view of your deployed IPS-appliances as well as other network devices such as routers, switches and PC's. Device Status, concurrent connections, High Availability and other parameters can be monitored by a single mouse-click.

**Logging & Reporting**  
Comprehensive **log collection** which stores the logs of deployed IPS-Firewalls in a SQL-database, enables high-speed trouble-shooting. Using the built-in **report** generator, you can quickly produce detailed statistics on network traffic, ASQ alarms, visited websites and other network activity.

NETASQ IPS-Firewalls have been built around a unique **real-time intrusion prevention** technology: **ASQ (Active Security Qualification)**. ASQ provides **context-based** intrusion prevention by analyzing traffic from network up to application layer, while applying **multiple methods** to identify and block malicious traffic. ASQ uses **classes** of attacks guaranteeing superior accuracy to protect against zero-day threats at wire speeds of up to 2 Gbps. This unique concept, linked to hardware specifically designed to provide next-generation intrusion prevention, allows NETASQ IPS-Firewalls to provide real-time application layer intrusion prevention **without degrading system performance**.



## Configuration

- Support for v5.0.x
- Deploy security policy on multiple IPS-Firewalls
- Simplified Object Management
- Launch external tools (SSH, Putty...)
- Logical grouping (by type, region, name)
- Hierarchical views
- Retrieve appliance information
- Launch management tools
- License updates
- Firmware updates
- Backup Configurations
- Automatic downloading of firmware updates

## Monitoring

- Topological Views
- Tree views
- Connection monitoring
- Administrative Views
- Firewall up-time
- Real-time monitoring
- Authenticated users
- Bandwidth utilization
- Resource Utilization
- Device Status monitoring
- Interface status monitoring
- High Availability monitoring
- Security breach monitoring
- IPS monitoring (ASQ)
- Alarms monitoring

## Logging & Reporting (only with unlimited versions)

- Central log collection
- Log consolidation
- Logs stored in SQL database
- Report Generation
- Graphical Reports
- Historical reporting
- System logging
- Audit Logging
- VPN Logging
- Content Filter reports (HTTP, SMTP, FTP)
- Network Activity

## Hardware Specifications required for the NETASQ Global Administration installation

Pentium III processor  
256 MB RAM (512 MB recommended)  
Hard disk space: Depends on logs  
10/100 Mbps Ethernet card  
Windows Internet Explorer 5  
Windows 2000 (SP3), XP (SP1).  
Disk space used for complete installation is approx. 40 MB.

## Supported Appliances

F10 IPS-Firewall\*  
F25 IPS-Firewall  
F50 IPS-Firewall  
F100 IPS-Firewall\*  
F200 IPS-Firewall  
F500 IPS-Firewall  
F100/C IPS-Firewall  
F1000 IPS-Firewall  
F2000 IPS-Firewall  
F5000 IPS-Firewall

\* except for A appliances

[www.netasq.com](http://www.netasq.com)

